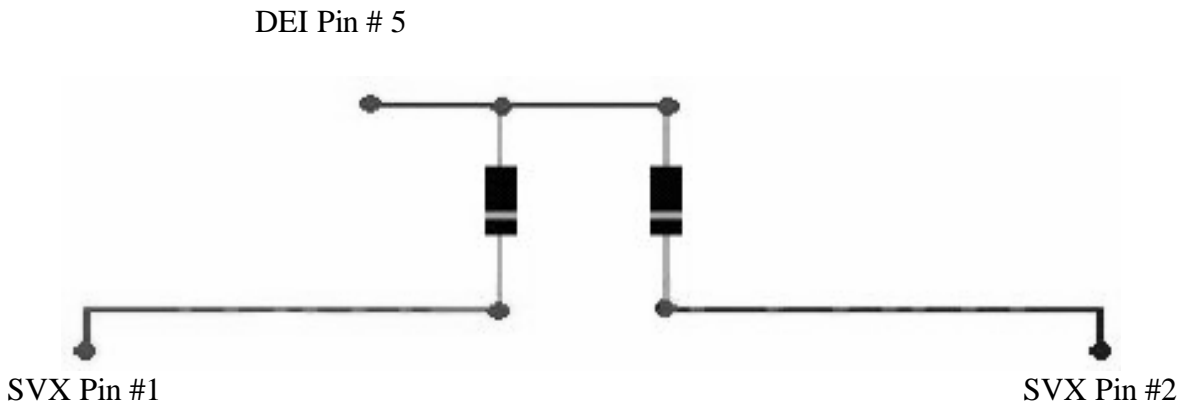


SVX Alarm Install wiring for DEI Rattler 300 using the security module plug on a 92 SVX LS-L

DEI Alarm Module Pins	SVX Security Module Plug
H1 block Pin #	SVX Pin #
1	-
2	10
3	-
4	-
5	pins 1 & 2 (see Door Triggers below)
6	4
7	-
8	8
9	5
10	to siren
11	9
12	-
H2 block Pin #	SVX Pin #
A	-
B	15
C	8
D	-
E	14
F	8

Door Triggers



On the SVX, which has two separate (-) door triggers that are isolated from each other, you will need to use two 1-amp blocking diodes for all doors to trigger the alarm. One trigger is for the driver's door and the second is for the passenger door. If you were just to connect to one of these and not both, only one door of the vehicle would be protected by the alarm. If you were to tie each of these together without the blocking diodes, some features of the vehicle will no longer function properly.