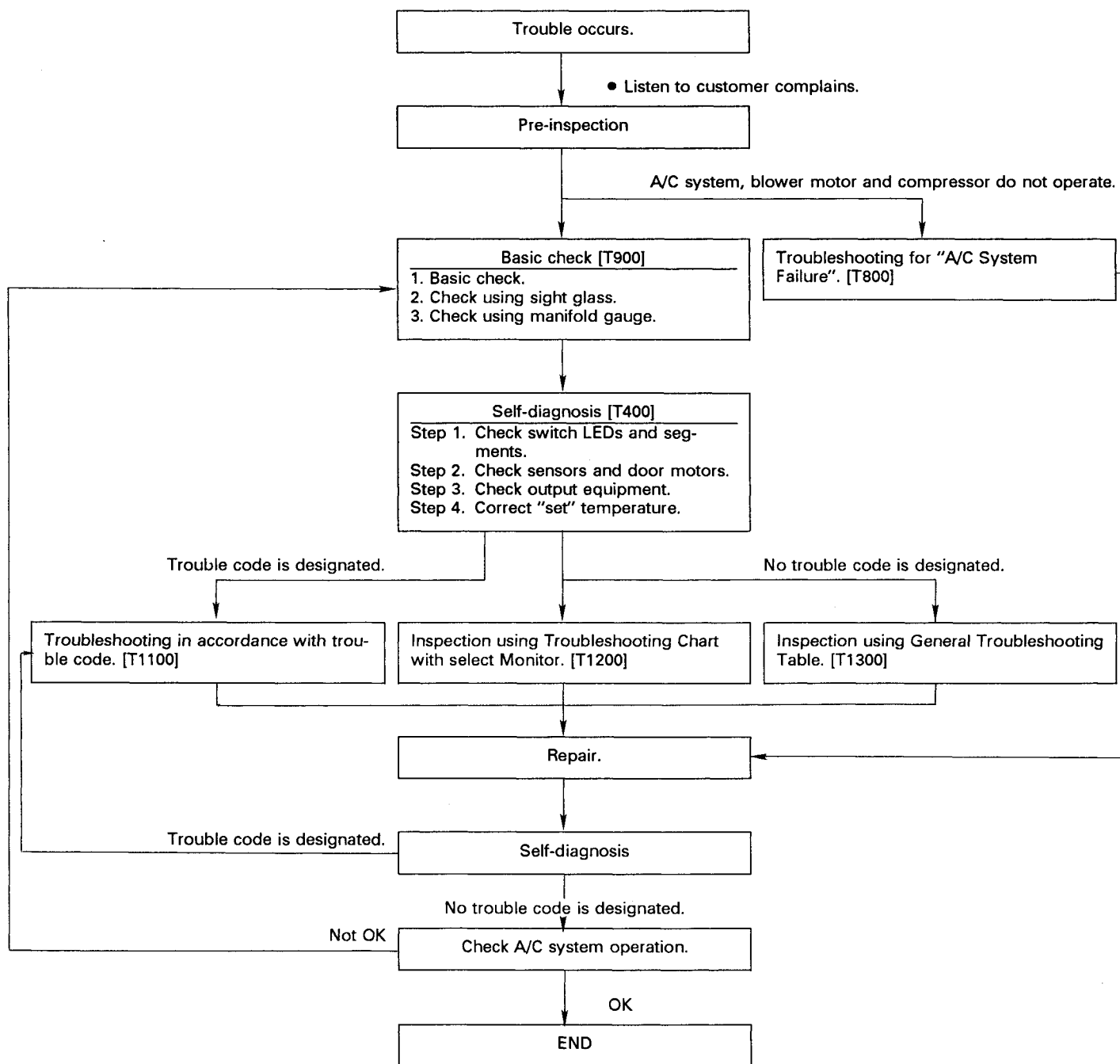


3. Troubleshooting Chart for Self-diagnosis System

A: BASIC TROUBLESHOOTING PROCEDURE



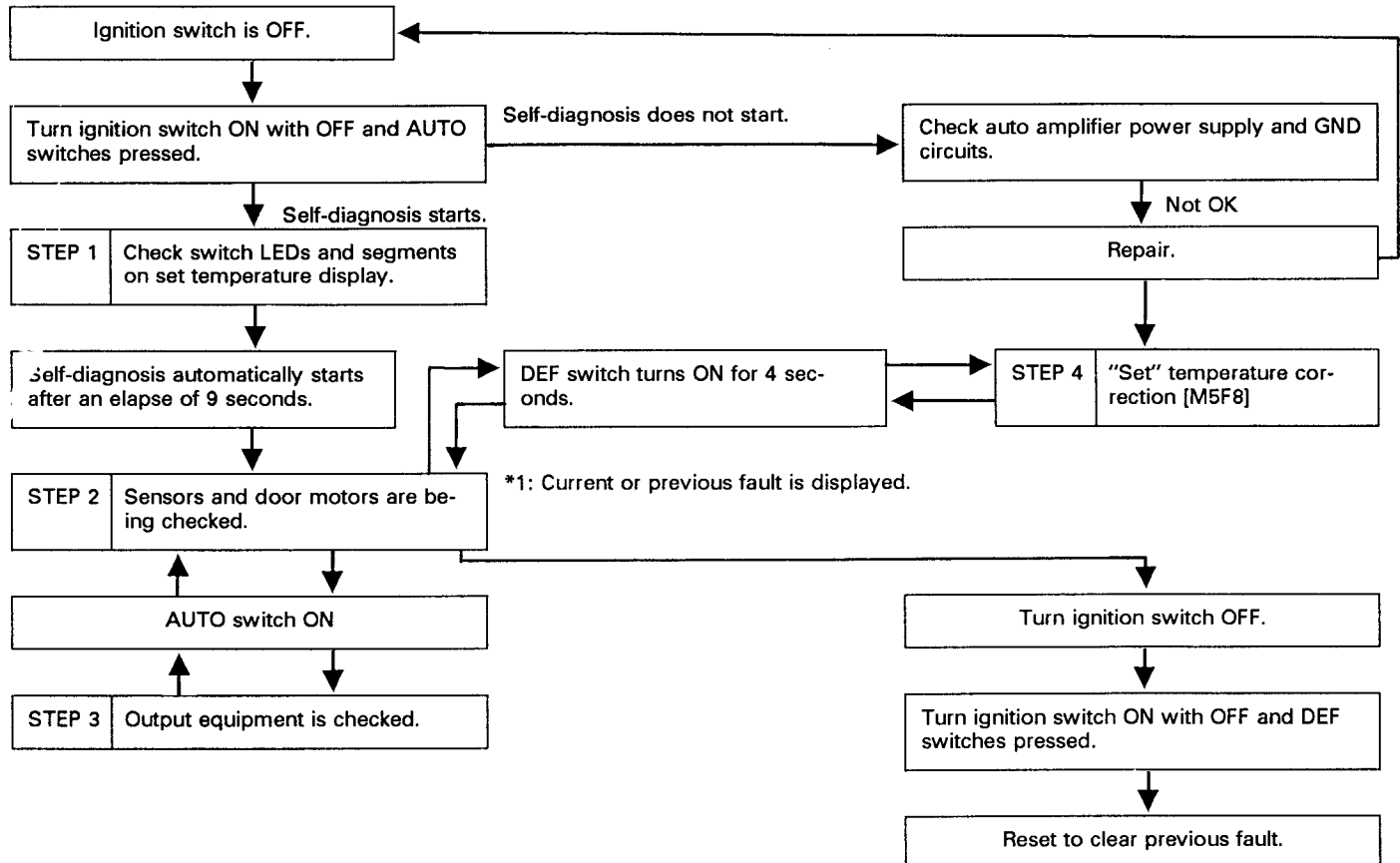
4. Self-diagnosis System

A: GENERAL

1. The self-diagnosis system checks the condition of various switch LEDs, set-temperature display segments (STEP 1), sensors (STEP 2) and output equipment

(STEP 3). It also sends predetermined control output signals to check the operation of the blower fan motor and mode door motors.

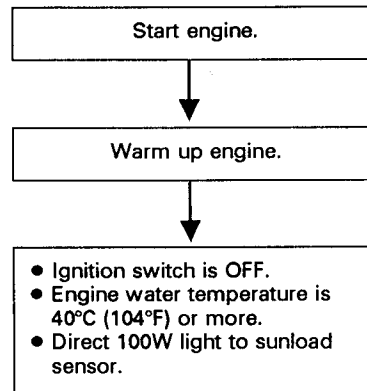
2. The compartment set temperature can be corrected in 3 steps to meet passenger's preference while the air conditioning system or heating unit is operating. (STEP 4)



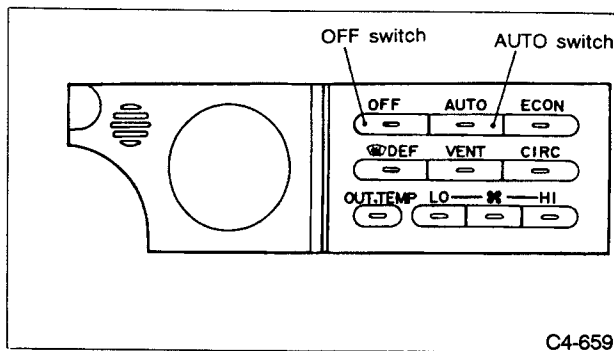
*1: Current fault ... A problem which is currently occurring

*2: Previous fault ... Stored in auto amplifier memory.

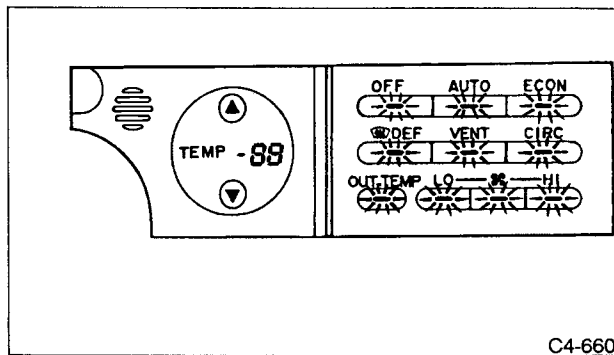
(Auto amplifier stores in memory up to 16 previous faults (such as poor connector contact, etc.).

B: FUNCTION**1. HOW TO START THE SELF-DIAGNOSIS**

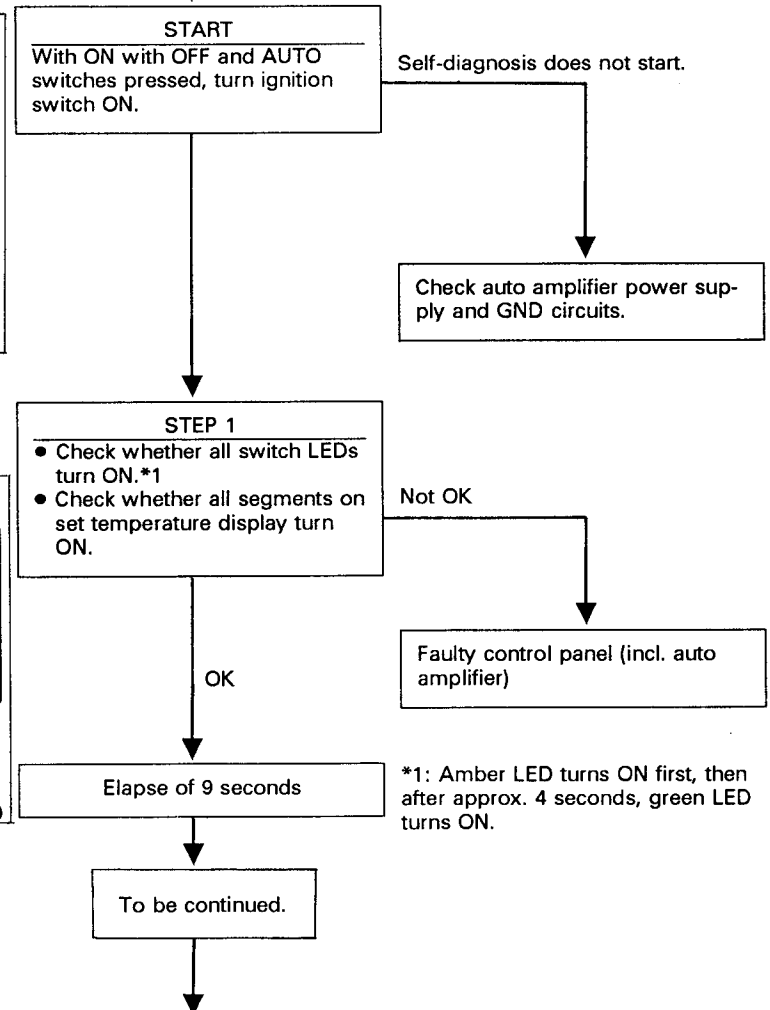
• START



• STEP-1



With OFF and OUT. TEMP switches, only green LED turns ON.



• STEP-2

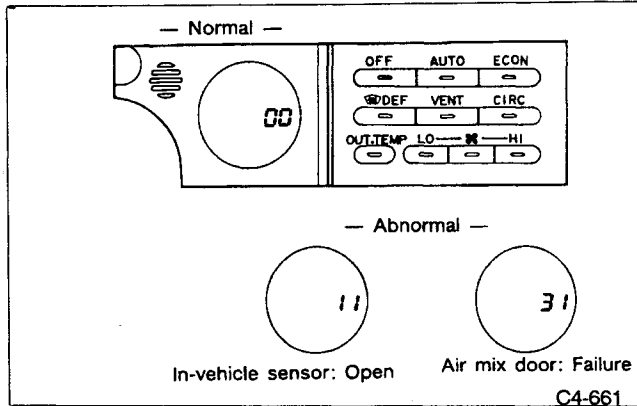


Fig. 171

STEP 2
Check segments "00" in set temperature display.

"00" does not appear.

Display presentation	Fault	Remarks
11.21	In-vehicle sensor	Open or shorted
12.22	Ambient sensor	Open or shorted
13.23*2	Sunload sensor	Open or shorted
14.24	Evaporator sensor	Open or shorted
15.25	Refrigerant temperature sensor	Open or shorted
16.26	Water temperature sensor	Open or shorted
31	Air mix door (PBR)	Faulty
32	Mode door (PBR)	Faulty
33	Mix door motor	Faulty engine
34	Mode door motor	Faulty engine
35	Intake door motor	Faulty engine

*2: Judged as "open" if light is not directed to sunload sensor.

*3: Circled figures refer to a fault which is currently occurring.

"00" appears.

AUTO SWITCH ON.

STEP 3

Check output equipment operation.

Each time DEF switch is pressed, operation step advances.

Operation step	①	②	③	④	⑤
"Set" temperature display	41	42	43	44	45
Outlet port	Defroster	Heat	Bi-level	Vent	Vent
Suction port	Fresh/Recirc	Fresh	Fresh	Fresh	Recirc
Air mix door	Max. hot	Max. hot	50%	Max. cold	Max. cold
Blower motor (V)	5	7	11	12 (Max. Hi)	12 (Max. Hi)
Compressor	ON	ON	OFF	OFF	ON
Compressor solenoid current (A)	0	0.65	0	0	0

OK

Not OK

Turn ignition switch OFF.

Repair.

Set DEF switch ON more than 4 seconds.

STEP 4

"Set" temperature correction

Press UP or DOWN switch.

Display presentation	Ambient temperature correction
10	<ul style="list-style-type: none"> Compartment temperature is set toward hot side with respect to standard position when ambient temperatures are low. Compartment temperature is set toward cold side with respect to standard position when ambient temperatures are high.
05	<ul style="list-style-type: none"> Standard position
00	<ul style="list-style-type: none"> Compartment temperature is set toward cold side in relation to standard position when ambient temperatures are low. Compartment temperature is set toward hot side in relation to standard position when ambient temperatures are high.

Turn ignition switch OFF.