

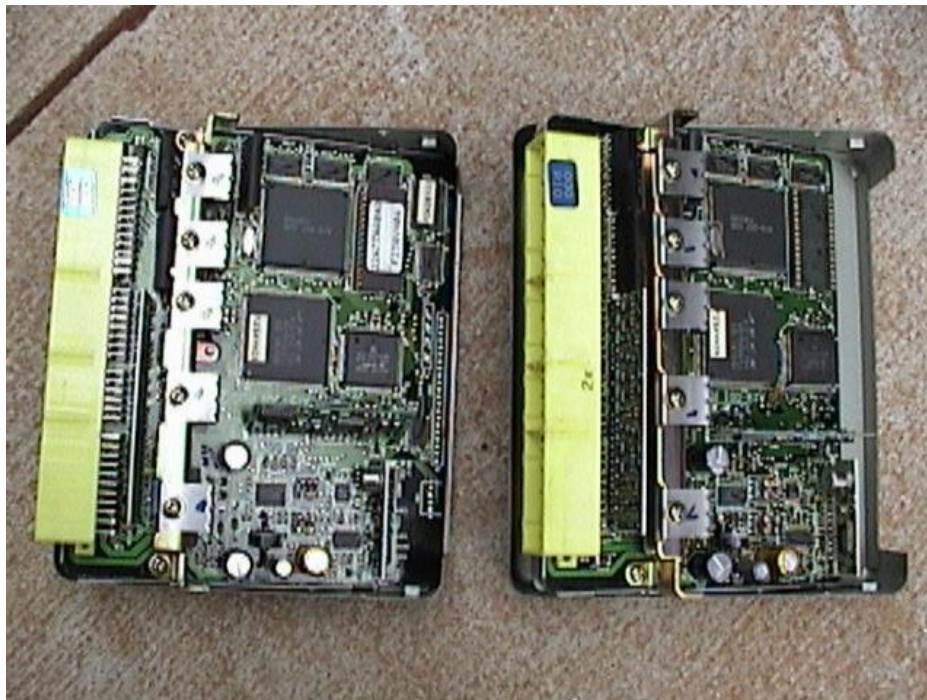
ECU Bead Crush

Author: immortal_suby

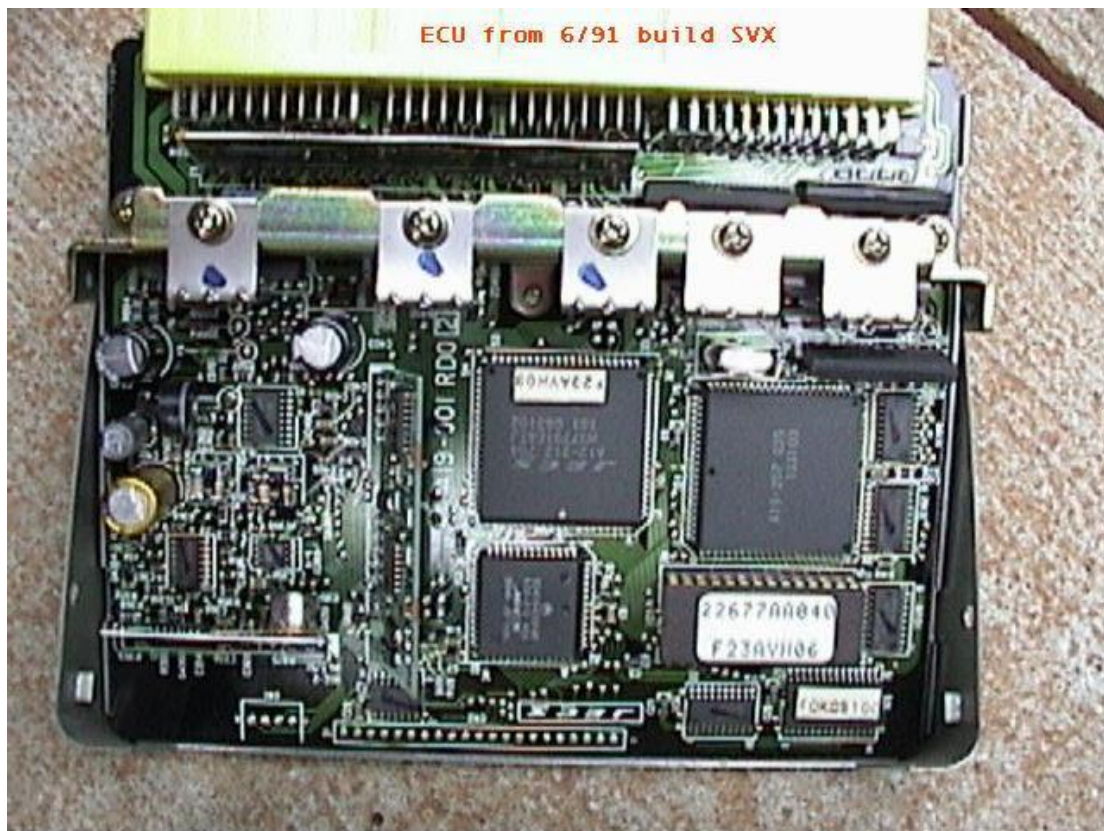
The following pictures will assist you with performing the fix in the "Acceleration Control" TSB. (see the [TSB](#) section for instructions)



1/92 and 6/91 ECUs



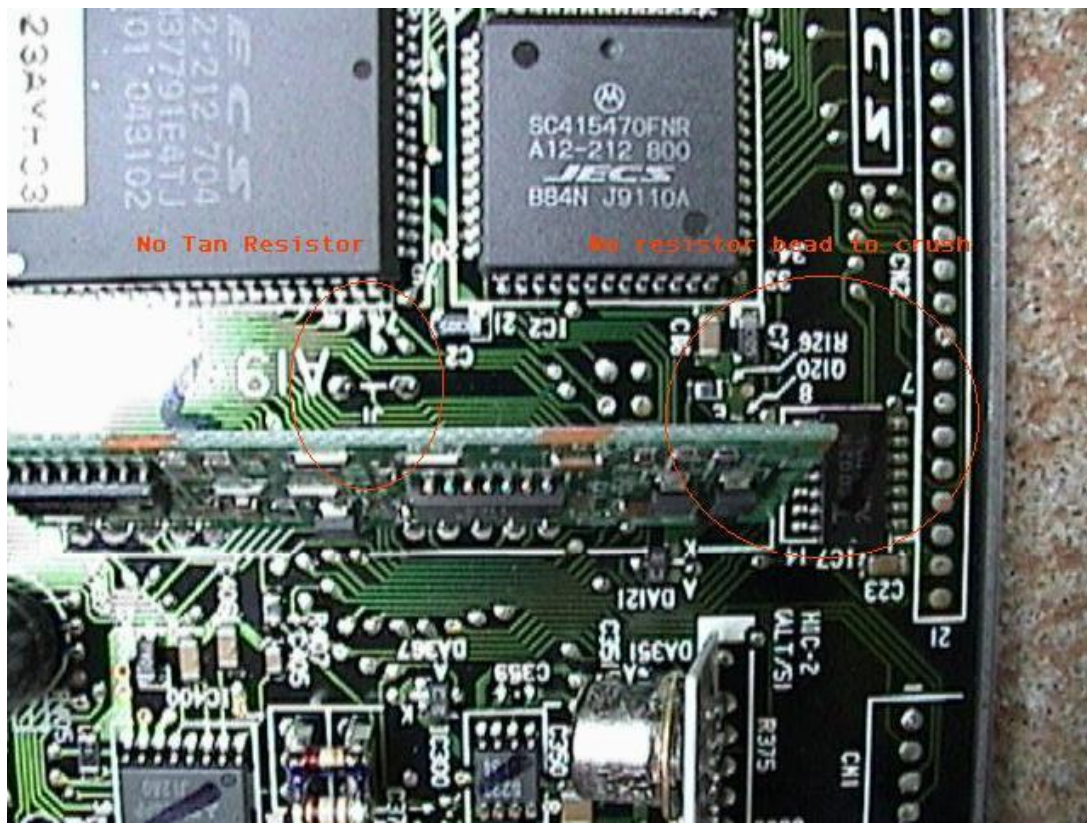
Internal View of the ECU



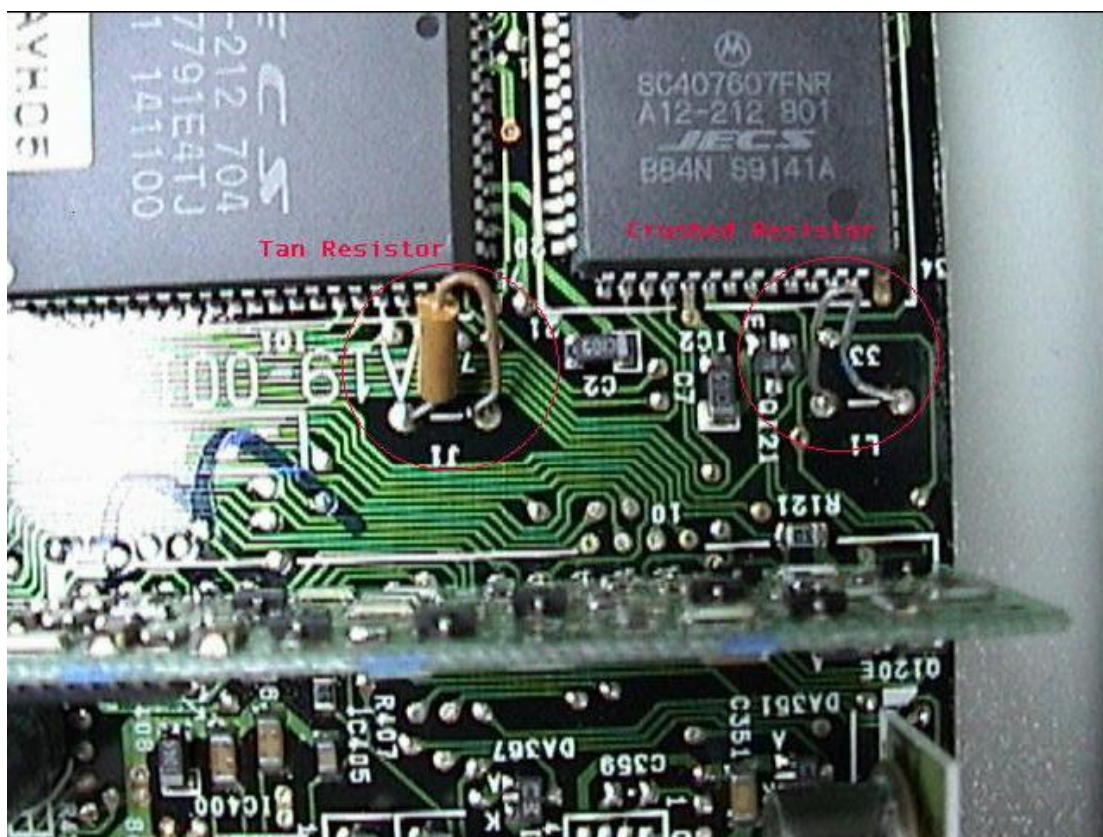
6/91 ECU – No Noise Suppressor Bead to Crush



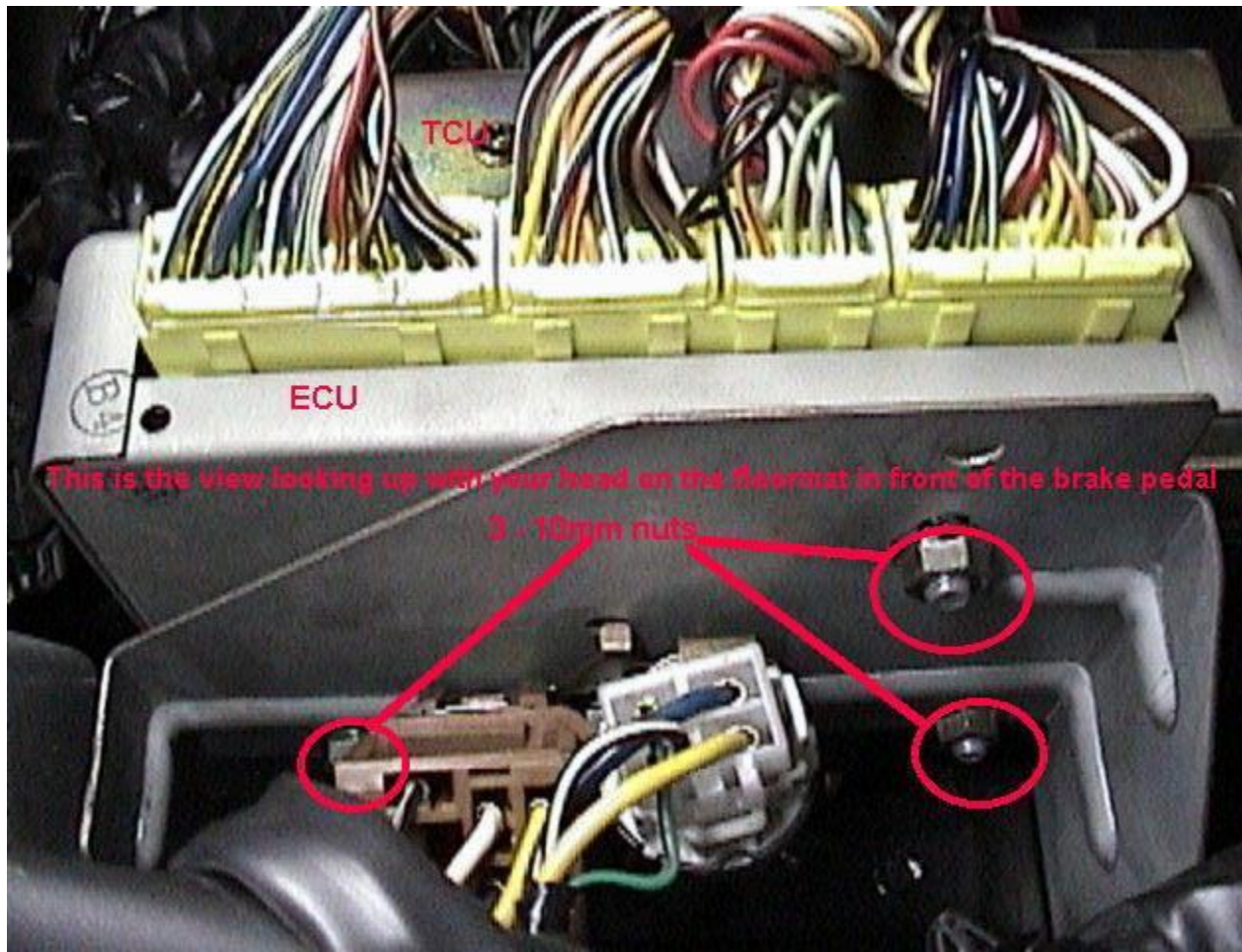
1/92 ECU – With Resistor and Black Noise Suppressor Bead



1/92 - No Tan Resistor and No Black Noise Suppressor Bead to Crush



6/91 Tan Resistor and Crushed Noise Suppressor Bead.



This is a view looking up at the ECU with your head on the floor mat in front of the brake pedal. To remove it, you remove 3 – 10 mm nuts.

Note: The TCU is located just above the ECU. (See above picture)